



**Centre for Abuse and Trauma Studies**  
*Academic and Applied research in the digital age*

# CATS centre launch at Middlesex University

25<sup>th</sup> March 2014

**Professor Julia Davidson &  
Professor Antonia Bifulco**

[www.cats-rp.org.uk](http://www.cats-rp.org.uk)



**Centre for Abuse and Trauma Studies**  
*Academic & Applied research in the digital age*



Programme

- 4.30 Welcome from the Dean of the Law School  
Professor Joshua Castellino-
- 4.40 CATS working with the police:  
Peter Spindler, HMIC and Author of the Yewtree Report
- 4.50 CATS working with health and social care  
Ron Giddens, Director of Services, St Christopher's Fellowship
- 5.00 Presentation: Introducing CATS:  
Professors Julia Davidson & Antonia Bifulco
- 5.15 Discussion
  
- 5.45 -6.30 Wine & nibbles



# CATS structure



- Centre for **research and knowledge exchange** on abuse and trauma. Founded 2008, moved to Middlesex University July 2013
- Multi-disciplinary:** Psychology & Criminology with social policy, law, social work and psychiatry.
- Large and small scale research that informs **policy and practice.**



# CATS Team (Williams 01)

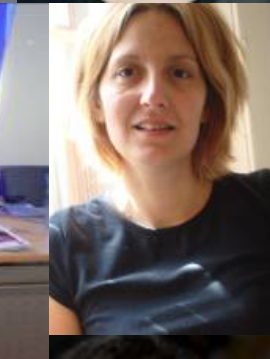


## Admin:

Natasa Blagojevic-Stokic

## Researchers

- Yael Ilan-Clarke
- Amanda Bunn
- Catherine Jacobs
- Jeffrey DeMarco
- Amanda Bunn
- Ruth Spence
  
- Catherine Jenkins
- Julie Grove-Hills
- Clare Choak
- Dr Elena Martellozzo
- Dr Andrea Oskis
- Deborah Rodriguez



Slide 4



# CATS advisory group



Geraldine Thomas



John Carr



Eileen Vizard



Adele Jones



Paula Nicolson



Ron Giddens

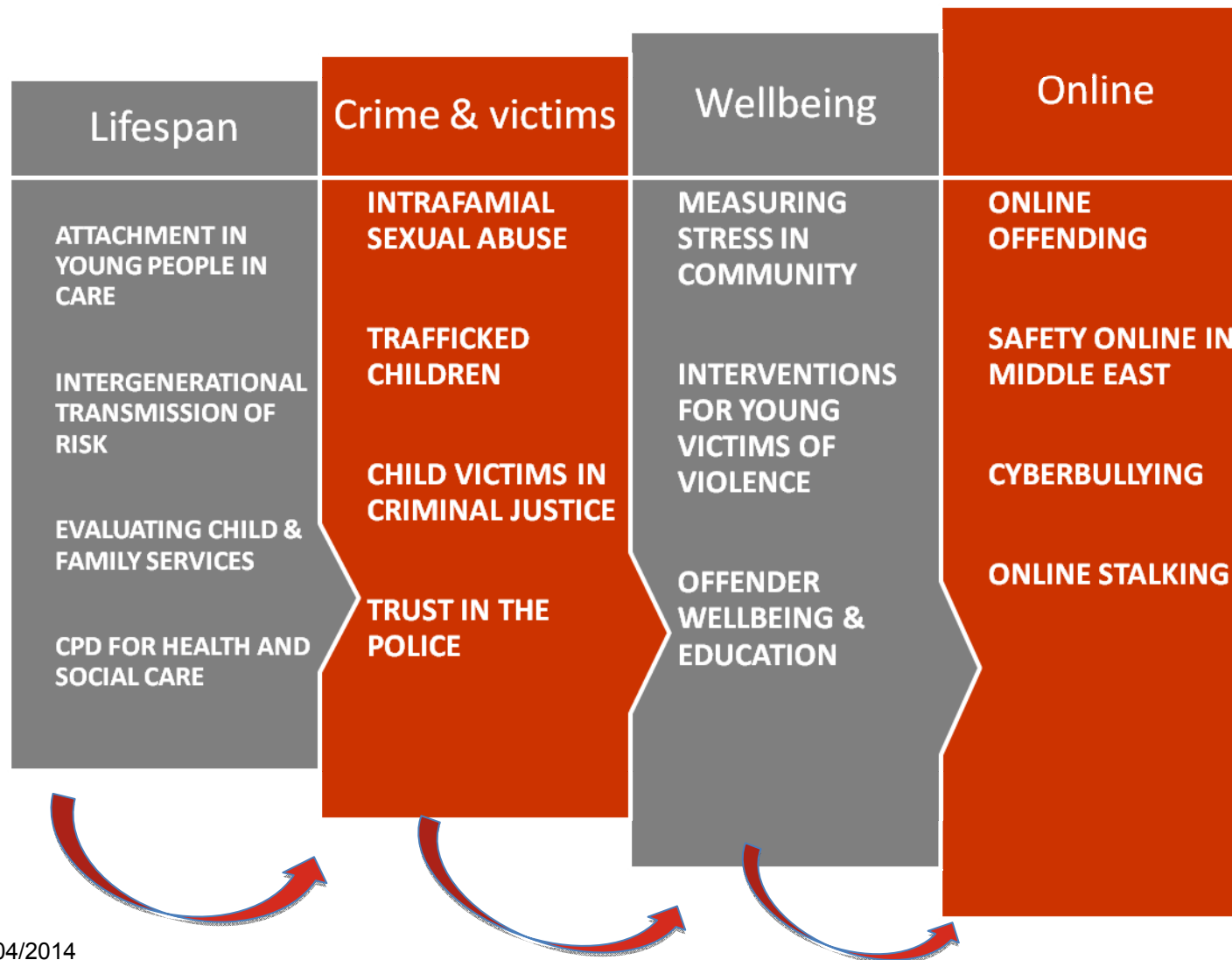


Peter Spindler

Joanna Adler



# CATS themes





# Academic Partners & Collaborators



## UK Universities

**KCL:** (Dr Helen Fisher; Dr Matthew Taylor, Prof Anne Farmer)

**Goldsmiths** (Prof Peter Smith ) (Dr Georgina Hosang)

**LSE** (Prof Sonia Livingstone) (Dr Vittoria Ardino)

**Edinburgh** (Dr Ethel Quayle)

**Lancaster** ( Prof Awais Rashid)

**Kingston** (Dr Muthana Samara & Christopher Hamerton)

## Worldwide

**Bahrain** (Dr Mohammed Al-Muttawa)

Tartu, **Estonia** (Dr Mare Ainsaar)

Kyushu, **Japan** (Prof Keiko Yoshida)

Kebangsaan, **Malyasia** (Dr Nor Bayah)

## European Universities

Mons, **Belgium** (Prof Thierry Pham)

Heidelberg, **Germany** (Prof Romauld Brunner & Dr Michael Kaess)

Studi di Palermo, **Italy** (Prof Vincenzo Caretti)

Ena, Italy (Prof Adriano Schimmenti)

Gothenberg **Sweden** (Dr Karin Ensin; Kerstin Frygner)

Linköping Sweden (Prof Carl Goran Svedin)

**Norwegian** School of Management, Oslo (Prof Petter Gottschalk)

Royal College of Surgeons **Dublin** ( Mary Aiken)

Minho, **Portugal** (Dr Barbara Figuerido, Dr Angela Maia)

Autonomous Univ Barcelona, **Spain** (Dr Neues Barrantes, Tamara Sheinbaum)

Alexandru Ioan Cuza, Iasi, **Romania** (Prof Nicoleta Turliuc)

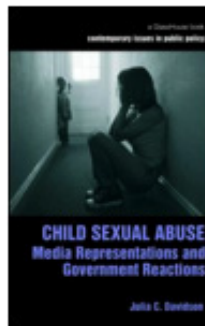
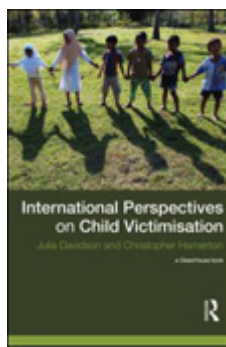
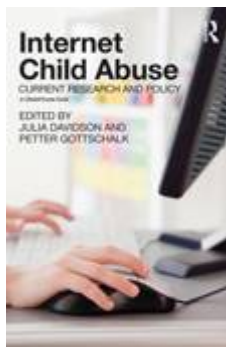


# Online & Crime/victims



## ONLINE

- **Cyberbullying:** Comparing UK and the Middle East (Qatar), (QNRF)
- **Online grooming** (EC- first European study of online grooming x 4 EU partners)
- **Online safety** - Young people and social media (NAO, CEOP)



## CRIME & VICTIMS

- **Intra-familial sexual abuse** (with Dr Miranda Horvath FPS MU) – evidence assessment
- **Child victims and the police:** review of investigative practice and ABE



- **Offender support post custody**







# Child Abuse Online & Offline: Consultancy & Collaboration



- Interpol Crimes Against Children Specialist Group
- US Sentencing Commission
- United Nations International Telecommunications Union (ITU)
- UNICEF
- Telecommunications Regulatory Authority Bahrain (TRA)
- Association of Chief Police Officers
- UK Council for Child Internet Safety
- Media work





# Wellbeing & Lifespan





## WELLBEING



**Stress online:** New online measure of life events in relation to depression and physical illness (ESRC)

**Youth violence intervention:** Victims of violence who attend A&E (GSTT Trust & Oasis Trust); Guy's and St Thomas' 

• **Offender wellbeing:** Parenting service provision   


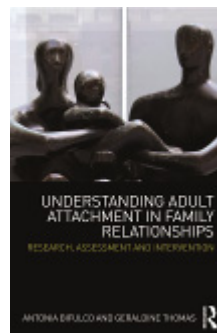
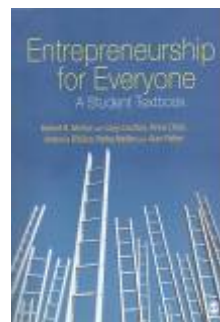
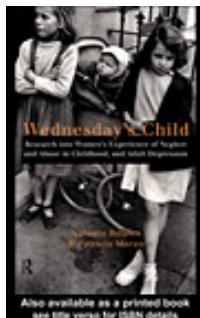
## LIFESPAN



**Young people in care:** Assessing attachment in residential care & fostering (St Christopher's Fellowship).

**Child attachment:** New assessments for social workers

**Assessing neglect/abuse:** In child protection (Kingston CP services).





## Knowledge Exchange - CPD training



Training package	Service	Profession	Short courses
Attachment style Interview (ASI)	Adoption/Fostering Perinatal services	Social work; Psychologists CAMHS	4-day & licensing
Adolescent attachment style (ASI-AD)	Residential care Clinical services Forensic services	Care workers; social workers; CAMHS psychologists	4-day
Childhood Experience of Care and Abuse (CECA)	Safeguarding services; Family support Forensic services	Social workers Clinical Psychologists Forensic psychologists	1-day courses (4 topics)
Parenting Role Interview (PRI)	Family Support;	Social workers, psychologists	2-day

*Licensing arrangements with Child and Family Training*



# Methods: Lifespan Collection for secondary analysis

[www.lifespancollection.org.uk](http://www.lifespancollection.org.uk)



## SAMPLE

500 London family life history interviews; adversity, relationships & clinical disorder across 3 generations (MRC sample)

## MATERIALS

2,000 audio-tape recordings;  
Typed detailed notes of ratings  
Large quantitative data based

## ARCHIVING

JISC funded for scoping archiving; copyright; ethics.  
Pilot use by students  
Secondary analysis funded through Psychology – Dr Frost  
'Case study' for e-repository

JISC





## Crime & victims

- Child trafficking – working with Interpol: Charmaine Deuker
- Young people and trust in the police: Jeffrey DeMarco

## Online

- Cyberstalking on adult dating sites: Nicola Cleaver
- Developing a victim typology around self generated indecent child images – partnered with Interpol: Mary Aiken

## Lifespan

- Attachment style in young people – an intergenerational study: Lisa Gabbarelli
- PTSD and sports intervention with Israeli youth: Sue Lawrence

## Wellbeing

- Depression and attachment in Taiwanese women: Lun Chi Chang
- Single parent status and depression in Malaysian mothers: Nor Bayah Abdul Kadir





# Our House of Lords event



KEY CHILD PROTECTION CHALLENGES IN THE REAL AND DIGITAL WORLDS: IMPLICATIONS FOR RESEARCH, POLICY & PRACTICE. Dec 5<sup>th</sup> 2013



## Growing CATS at Mdx – further collaboration



### Increasing inter-disciplinary opportunities at MU:

- Research applications with staff in Psychology, H&SE; Criminology , Law , also social policy, social work, complementary health, nursing, education, business, computer science?
- Seminar or workshop series?
- Research events?
- Joint PhD supervision?
- Joint CPD events?
- Membership scheme?
- Other ideas?



## Contact



- [A.Bifulco@mdx.ac.uk](mailto:A.Bifulco@mdx.ac.uk)
- [J.Davidson@mdx.ac.uk](mailto:J.Davidson@mdx.ac.uk)

[www.cats-rp.org.uk](http://www.cats-rp.org.uk)

[www.attachmentstyleinterview.com](http://www.attachmentstyleinterview.com)

[www.cecainterview.com](http://www.cecainterview.com)

[www.parentingrole.com](http://www.parentingrole.com)

[www.lifespancollection.org.uk](http://www.lifespancollection.org.uk)

Twitter: @juliadavidson13 @CATS\_lifespan